



CRAIS

Cryo Air Medical Treatment Machine

What is cryotherapy?

This is the applied medical apparatus which heals the disease of the muscles and the joints with clean low temperature air exempt from the humidity and dust through the specially designed thermal exchanger using circumstantial air.

Cryotherapy is already available in advanced countries and domestically is acknowledged products having high recovery effect in clinical demonstration after co-research with Rehabilitation Technical Research Center as the Health Medical Technology Research Project arranged by the Health Welfare Department.

INTRODUCTION

- Adopting R-404A, Considering environment and the human body, is highly effective to release the pain and It is the products to solve the limitation of the ice pack and the harmfulness of nitrogen cooling therapy and release the pain with the -30 °C cold air.

FEATURES

- Operating by an artificial intelligence MICOM

The operational mode of the machine will be displayed on the panel as figures, characters and numeric lamps to allow you to be well informed of its operational status for easy control

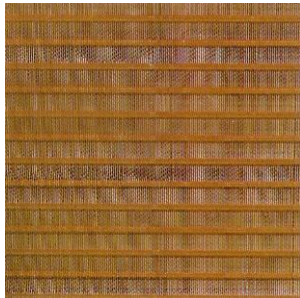


- Specially designed heat exchanger

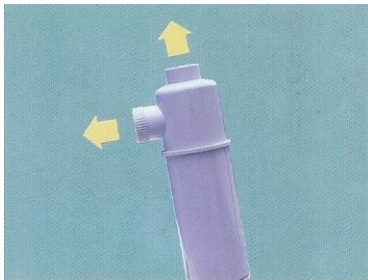
The special heat exchanger will maximize the efficiency of heat transfer, while maintaining the evaporating temperature of $-25^{\circ}\text{C} \sim -30^{\circ}\text{C}$ and the defrosting effect simultaneously.

- Heat exchanger specially adopt Copper coated Aluminum fin:

Sterilization function of copper it self keeps bacterial reproduction in the heat exchanger Under control, which always maintains optimal condition in it.



- The 6 stage evaporator motor will control volume of cold air.
- A new refrigerant R-404A has been adopted.
The new refrigerant is not only un toxic but also has no effect on the ozone layer(ODP=0).
This is a HFC family.
- A next-generation refrigerant compressor has been employed
A special R-404A compressor has been employed for maximum efficiency.
- It is convenient to control direction of Air



- It can be used to fix the supply part of cold air and it's not difficult for long therapy period. Since the cold air discharging nozzle can be hooked over the hanger, used does not need to hold the nozzle continuously.



- It has different sized nozzles according to the parts of disease and it doesn't have the risk to lose the nozzles for unifying keeping nozzles and the cover of the device.



- It is easy to move for unifying the conveyor handle with the cover of the products.
- The machine will begin to work within 10 minutes after the power source is supplied.
- A manual defrosting function has been added up.
- A centrifugal fan with a built-in motor has been attached the condenser for compactness and high blowing capacity.
- Diverse cold air discharging nozzles can be applied to the painful parts.
- The revolving wheel will help you move the machine or changer its operational direction easily.

PRODUCTS SPECIFICATION

Model	CRAis
Power Input	0.79 ~ 1.1kW
Size	L504 × W546 × H1091
Noise occurrence rate	55 ~ 64dB
Treatment Temperature	-33°C Max
Length of tube	170cm
Weight	65kg
Dehumidification ratio	98%
Air volume	170 ~ 500 l/min

CONTACT INFORMATION

Thank you!!

1514-49 Beomcheon 2 dong, JinGu, Busan, Korea

TEL: 051-635-2658, 82-51-635-2658

Fax: 02-6670-2861, 82--2-6670-2861

MOBILE : 018-524-2658, 82-18-524-2658

www.rskmed.com

E-mail: trade@rskmed.com

Contact Person: Mr. SungHoon, Jung

RSK MED TECHNOLOGIES